

# MOUNTAINGATE 2ND ADDITION

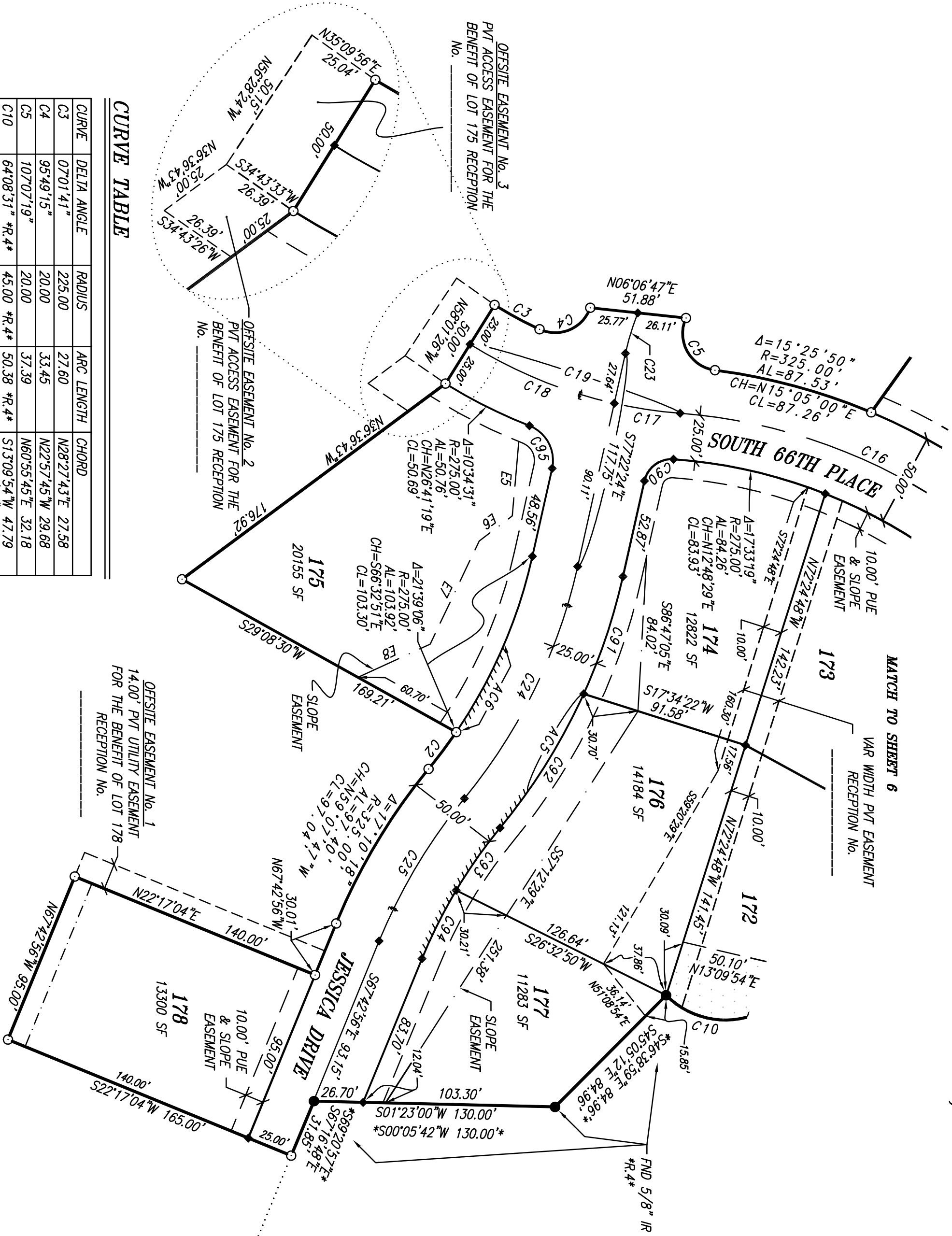
NE1/4 SEC 3, T.18S., R.2W. W.M.  
 SPRINGFIELD, LANE COUNTY, OREGON  
 SURVEYED: FEBRUARY 2, 2007

**RECORDED**

DATE: COUNTY CLERK

BY:

LANE COUNTY SURVEYORS OFFICE  
 CSF NO. FILE DATE



**CURVE TABLE**

CURVE	DELTA ANGLE	RADIUS	ARC LENGTH	CHORD
C3	07°01'41"	225.00	27.60	N28°27'43"E 27.58
C4	95°49'15"	20.00	33.45	N22°57'45"W 29.68
C5	107°07'19"	20.00	37.39	N60°55'45"E 32.18
C10	64°08'31" *R.4*	45.00	50.38	*S13°09'54"W 47.79 *S11°16'43"W 47.79*
C16	39°59'57"	300.00	209.44	S24°22'57"W 205.21
C17	08°14'38"	250.00	35.97	S08°30'17"W 35.94
C18	19°20'58"	250.00	84.43	S22°18'05"W 84.03
C19	27°35'36"	250.00	120.40	S18°10'46"W 119.24
C23	08°43'06"	150.00	22.82	S73°00'52"E 22.80
C24	26°49'46"	300.00	140.48	S63°57'31"E 139.20
C25	17°10'18"	300.00	89.91	S59°07'47"E 89.57
C29	81°24'13"	15.00	21.31	N56°40'18"W 19.56
C91	11°46'56"	325.00	66.53	N71°28'56"W 66.71
C92	15°02'50"	325.00	85.35	N68°04'03"W 85.11
C93	08°35'09"	275.00	41.21	S54°50'12"E 41.17
C94	08°35'09"	275.00	41.21	N63°25'22"W 41.17
C95	81°13'33"	20.00	28.35	N62°00'49"E 26.04

**EASEMENT LINE TABLE**

LINE	DIRECTION	DISTANCE
E5	S85°06'33"E	40.24
E6	S37°12'46"E	22.47
E7	S64°34'42"E	61.52
E8	S24°38'20"E	42.90

**REFERENCES**

<R.1> RECORD DATA PER MOUNTAINGATE 1ST ADDITION, AS PLATTED AND RECORDED APRIL 3, 2006, RECEPTION NO. 2006-022556.

[R.2] RECORD DATA PER LAND PARTITION PLAT No. 97-P0971, FILED APRIL 11, 1997.

(R.3) RECORD DATA PER BARGAIN AND SALE DEED RECORDED MARCH 11, 2004, RECEPTION NO. 2004-017290.

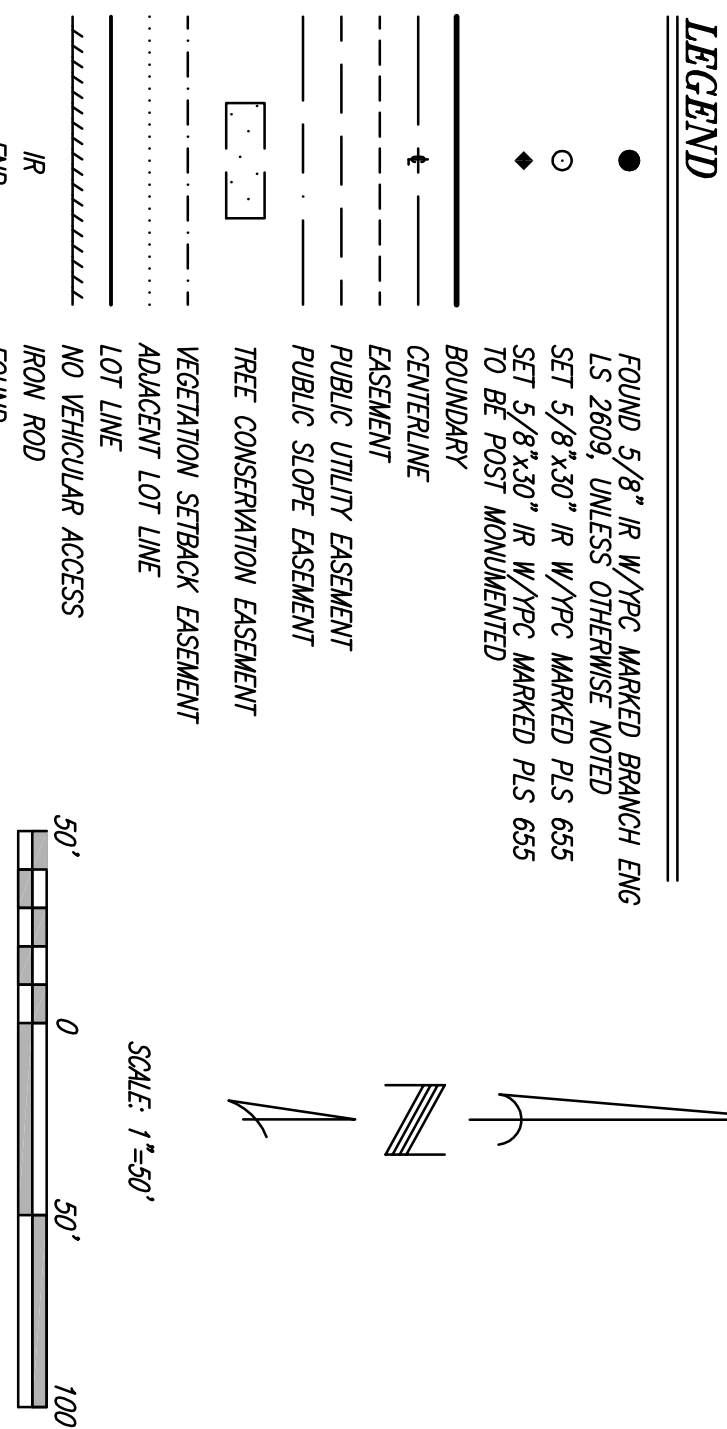
\*R.4\* RECORD DATA PER COUNTY SURVEY FILE 24697 FILED FEBRUARY 27, 1981.

**ACCESS CONTROL CURVE TABLE**

CURVE	DELTA ANGLE	RADIUS	ARC LENGTH	CHORD
A05	10°39'13"	325.00	60.43	N60°15'52"W 60.34
A06	11°18'17"	275.00	54.26	S61°22'27"E 54.17

**NOTES**

- NO BUILDING, STRUCTURE, TREE, SHRUBBERY OR OTHER OBSTRUCTION SHALL BE PLACED ON OR IN A PUBLIC UTILITY EASEMENT.
- SEE COAR'S AS REFERENCED ON PAGE 8 FOR RESTRICTIONS REGARDING CONSERVATION AND VEGETATION EASEMENTS.
- THE EASEMENT ENTITLED "DECLARATION OF PRIVATE ACCESS EASEMENTS", RECORDED CONCURRENTLY WITH THIS PLAT ON \_\_\_\_\_, LANE COUNTY OFFICIAL RECORDS, ESTABLISHES EASEMENT RIGHTS FOR LOT 175 OVER THE AREAS NOTED HEREON AS "OFFSITE EASEMENT No. 2" AND "OFFSITE EASEMENT No. 3". SAID "OFFSITE EASEMENT No. 3" IS SUBJECT TO EXTINGUISHMENT. SEE THE RECORDED DOCUMENT FOR DETAILS.



REGISTERED PROFESSIONAL LAND SURVEYOR

OREGON  
 JULY 10, 1964  
 LAWRENCE B. OLSON  
 655

RENEWAL DATE: 12-31-2008

**SHEET 7 OF 8**

OLSON & MORRIS 380