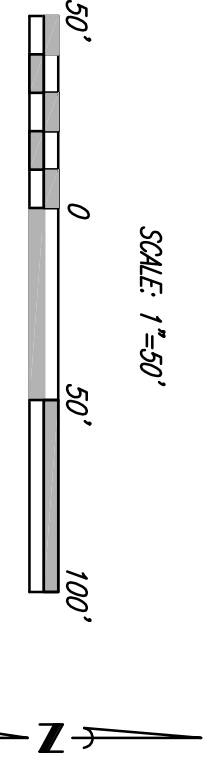
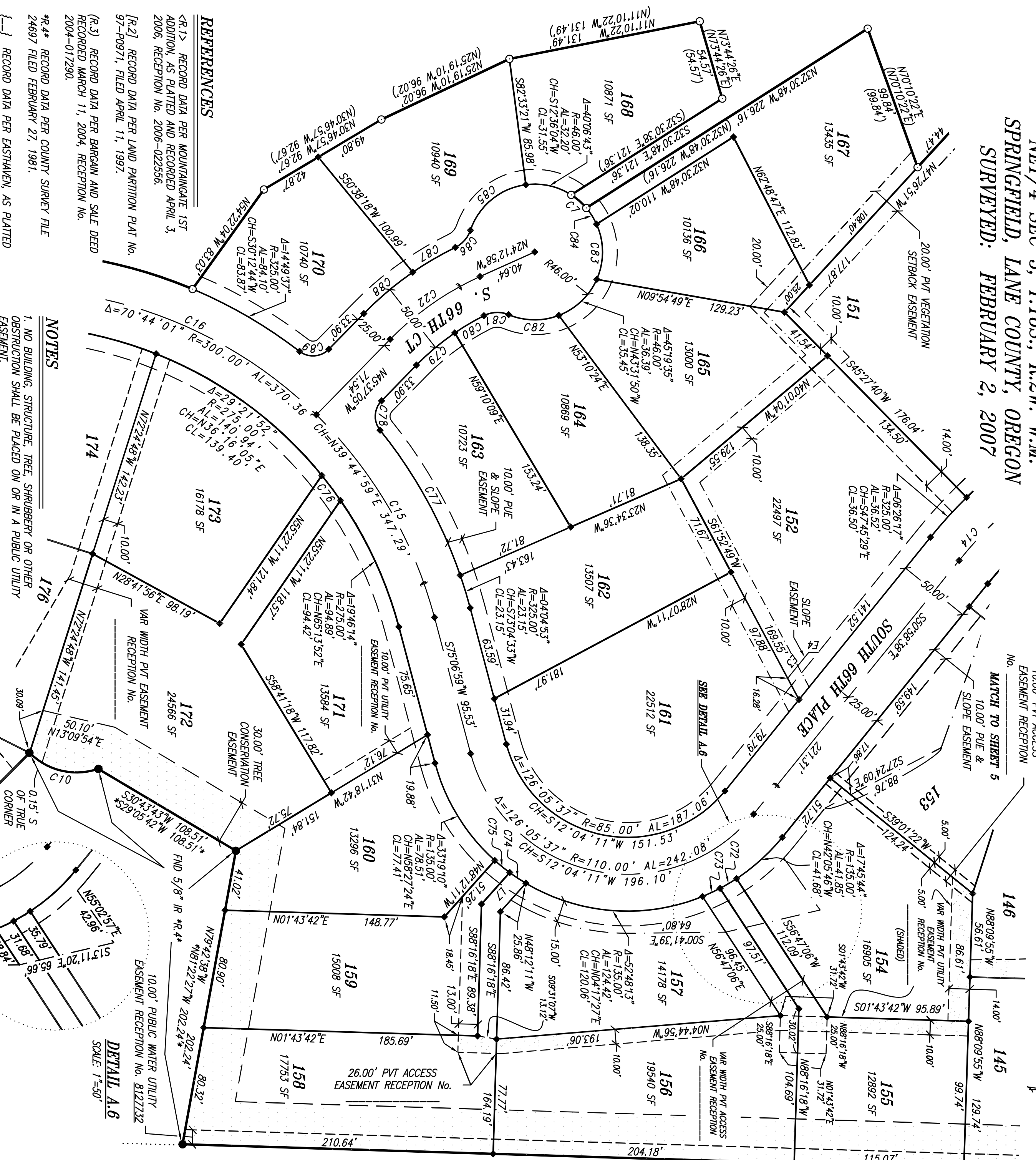


MOUNTAINGATE 2ND ADDITION

NE1/4 SEC 3, T.18S., R.2W. W.M.
 SPRINGFIELD, LANE COUNTY, OREGON
 SURVEYED: FEBRUARY 2, 2007



RECORDED
 DATE: COUNTY CLERK
 BY:

LANE COUNTY SURVEYORS OFFICE
 CSF NO. _____
 FILE DATE _____

LEGEND

- FOUND 5/8" IR W/PC MARKED BRANCH ENG
- L3 2609, UNLESS OTHERWISE NOTED
- SET 5/8"x30" IR W/PC MARKED PLS 655
- SET 5/8"x30" IR W/PC MARKED PLS 655 TO BE POST MONUMENTED
- BOUNDARY
- CENTERLINE
- EASEMENT
- PUBLIC UTILITY EASEMENT
- PUBLIC SLOPE EASEMENT
- TREE CONSERVATION EASEMENT
- VEGETATION SETBACK EASEMENT
- ADJACENT LOT LINE
- LOT LINE
- IRON ROD
- FOUND
- YELLOW PLASTIC CAP
- COUNTY SURVEY FILE
- LAND PARTITION PLAT NUMBER
- PRIVATE
- PUBLIC UTILITY EASEMENT
- VARIABLE
- SQUARE FEET

CURVE TABLE

CURVE (R-3)	DELTA ANGLE	RADIUS	ARC LENGTH	CHORD
C7	165°56'14"	46.00	13.60	N41°07'32"E 13.55
C10	64°08'31" 46.4*	45.00 46.4*	50.38 46.4*	S13°09'54"W 47.79 *S11°16'43"W 47.79*
C14	28°16'07"	300.00	148.01	S36°50'34"E 146.52
C15	30°44'04"	300.00	160.93	S9°44'57"W 159.00
C16	39°59'57"	300.00	209.44	S24°22'57"W 205.21
C22	21°24'07"	200.00	74.71	N24°55'07"W 74.27
C72	05°31'33"	135.00	13.02	N30°27'07"W 13.02
C73	05°34'41"	135.00	13.14	N2°54'00"W 13.14
C74	05°34'41"	135.00	13.14	N33°28'55"E 13.14
C75	05°31'33"	135.00	13.02	N39°02'02"E 13.02
C76	04°23'44"	275.00	21.09	N53°08'53"E 21.09
C77	19°53'48"	325.00	112.86	S61°05'12"W 112.29
C78	83°14'37"	15.00	21.79	N87°14'23"W 19.93
C79	11°07'45"	175.00	33.99	N40°03'12"W 33.94
C80	07°30'30"	175.00	22.93	N30°44'05"W 22.92
C81	49°33'51"	20.00	17.30	N02°11'54"W 16.77
C82	43°27'03"	46.00	34.88	N00°51'30"E 34.05
C83	47°57'55"	46.00	38.51	S89°49'25"E 37.39
C84	16°14'48"	46.00	13.04	S57°43'03"W 13.00
C85	63°53'15"	46.00	51.32	S39°24'55"E 48.70
C86	45°20'42"	20.00	15.83	S48°42'12"E 15.42
C87	08°31'30"	225.00	33.48	S07°17'36"E 33.45
C88	11°03'44"	225.00	43.44	S40°05'13"E 43.37
C89	83°14'37"	15.00	21.79	S03°59'46"E 19.93

LINE TABLE

LINE	DIRECTION	DISTANCE
L7	N48°12'11"W	28.70'

EASEMENT LINE TABLE

LINE	DIRECTION	DISTANCE
E3	N60°58'38"W	22.66'
E4	N00°53'29"E	6.36'

REGISTERED PROFESSIONAL LAND SURVEYOR

OREGON
 JULY 10, 1964
 LAWRENCE B. OLSON
 655

RENEWAL DATE: 12-31-2008

SHEET 6 OF 8

OLSON & MORRIS 380