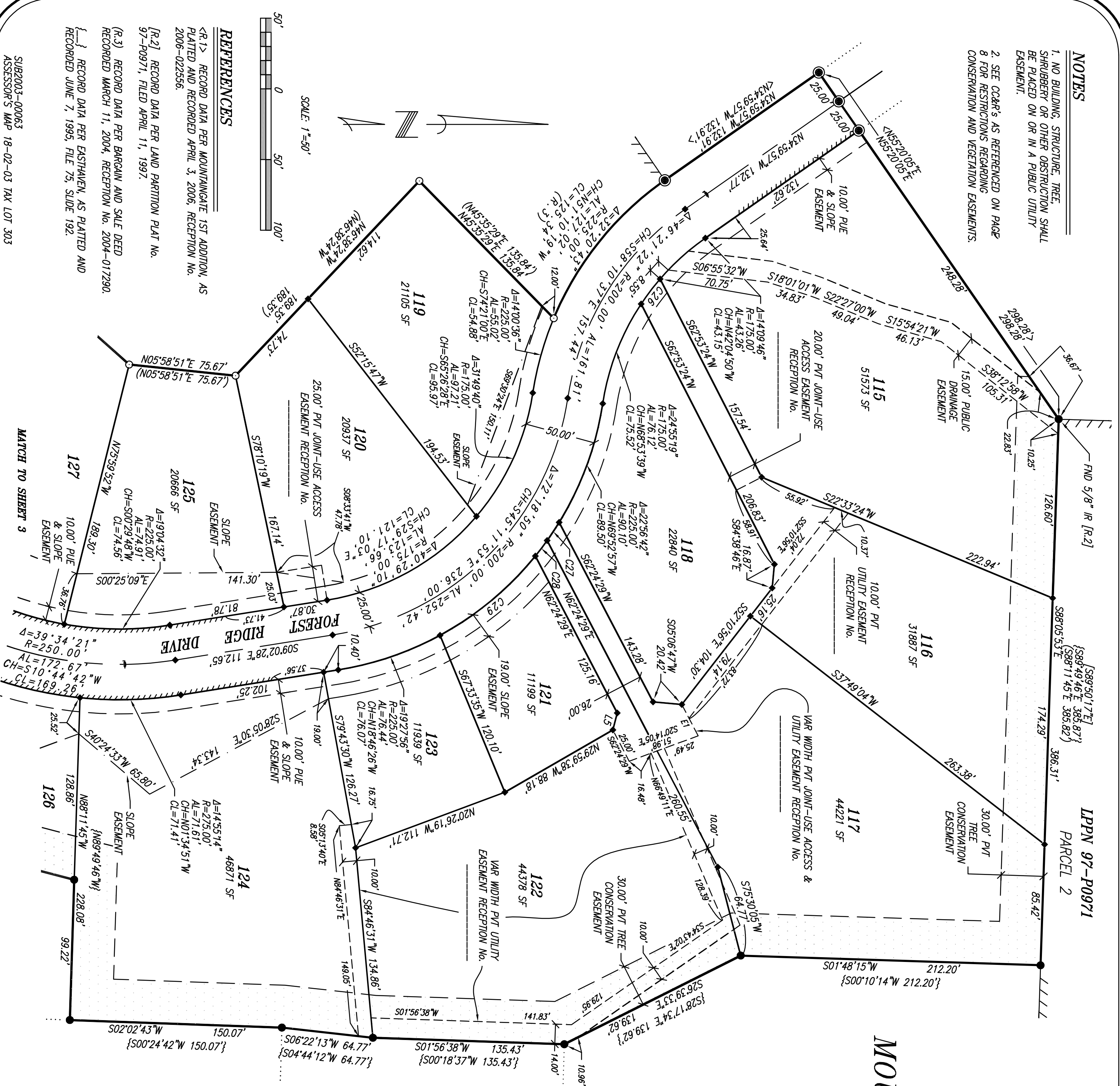


- NOTES**
1. NO BUILDING, STRUCTURE, TREE, SHRUBBERY OR OTHER OBSTRUCTION SHALL BE PLACED ON OR IN A PUBLIC UTILITY EASEMENT.
 2. SEE C&G'S AS REFERENCED ON PAGE 8 FOR RESTRICTIONS REGARDING CONSERVATION AND VEGETATION EASEMENTS.



RECORDED

DATE: _____
COUNTY CLERK
BY: _____

LANE COUNTY SURVEYORS OFFICE
CSF NO. _____
FILE DATE _____

MOUNTAINGATE 2ND ADDITION
NE1/4 SEC 3, T.18S, R.2W. W.M.
SPRINGFIELD, LANE COUNTY, OREGON
SURVEYED: FEBRUARY 2, 2007

LEGEND

- FOUND 5/8" IR W/YPC MARKED BRANCH ENG LS 2609, UNLESS OTHERWISE NOTED
- FOUND 5/8" IR W/YPC MARKED PLS 655
- SET 5/8"x30" IR W/YPC MARKED PLS 655
- SET 5/8"x30" IR W/YPC MARKED PLS 655 TO BE POST MONUMENTED BOUNDARY
- CENTERLINE EASEMENT
- PUBLIC UTILITY EASEMENT
- PUBLIC UTILITY EASEMENT
- PUBLIC SLOPE EASEMENT
- TREE CONSERVATION EASEMENT
- ADJACENT LOT LINE
- LOT LINE
- NO VEHICULAR ACCESS
- IR FOUND
- IRON ROD FOUND
- YELLOW PLASTIC CAP FOUND
- COUNTY SURVEY FILE
- LAND PARTITION PLAT NUMBER
- PRIVATE
- PUBLIC UTILITY EASEMENT
- VARIABLE
- SF SQUARE FEET

CURVE TABLE

CURVE	DELTA ANGLE	RADIUS	ARC LENGTH	CHORD
C26	07°16'16"	175.00	22.21	N52°47'51"W 22.19
C27	03°55'33"	225.00	15.42	N65°26'50"W 15.41
C28	03°31'00"	225.00	13.81	N52°43'33"W 13.81
C29	22°27'39"	225.00	88.20	N59°44'13"W 87.64

LINE TABLE

LINE	DIRECTION	DISTANCE
L5	S75°17'46"E	12.42'

EASEMENT LINE TABLE

LINE	DIRECTION	DISTANCE
E1	N62°24'29"E	25.00'

REGISTERED PROFESSIONAL LAND SURVEYOR
OREGON
JULY 10, 1964
LAWRENCE B. OLSON
655

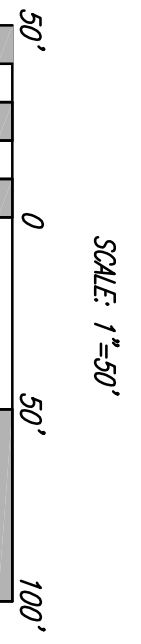
RENEWAL DATE: 12-31-2008

SHEET 2 OF 8

OLSON & MORRIS 380

REFERENCES

- <R.1> RECORD DATA PER MOUNTAINGATE 1ST ADDITION, AS PLATTED AND RECORDED APRIL 3, 2006, RECEPTION NO. 2006-022556.
- <R.2> RECORD DATA PER LAND PARTITION PLAT NO. 97-P0971, FILED APRIL 11, 1997.
- <R.3> RECORD DATA PER BARGAIN AND SALE DEED RECORDED MARCH 11, 2004, RECEPTION NO. 2004-017290.
- <f.1> RECORD DATA PER EASTHAVEN, AS PLATTED AND RECORDED JUNE 7, 1995, FILE 75, SLIDE 192.



SUB2003-00063
ASSESSOR'S MAP 18-02-03 TAX LOT 303